



WASATCH RESOURCE RECOVERY

TURNING **ORGANICS** INTO **ENERGY**



Approx. 40% of food produced in the U.S. is wasted. Nearly all this waste ends up in our landfills.

Through Wasatch Resource Recovery, you can divert your food waste from the landfill resulting in considerable cost savings and long-term risk management.

For more information about how to divert your organic waste to the Wasatch Resource Recovery facility, please contact:

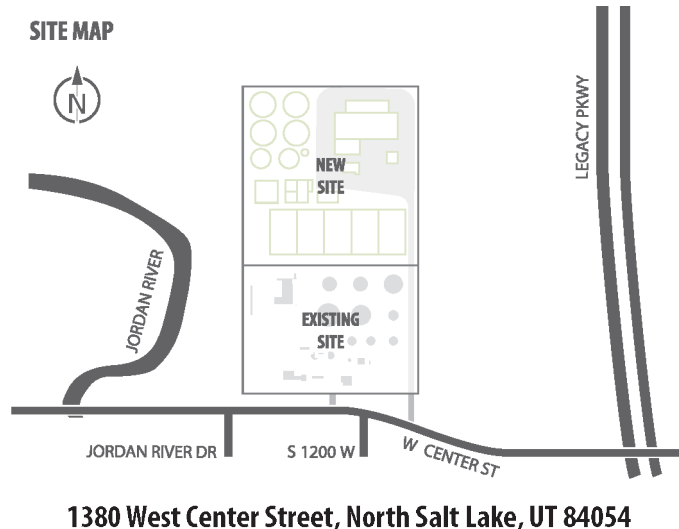
Morgan Bowerman
801.380.5696

mbowerman@wasatchresourcerecovery.com

wasatchresourcerecovery.com



Wasatch Resource Recovery is a facility operated under a public-private partnership between ALPRO Energy & Water and the South Davis Sewer District.



TURNING ORGANICS INTO ENERGY

GENERATION

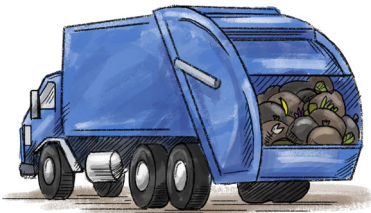
Any entity producing organic, biodegradable waste can divert material to anaerobic digestion.

Good candidates for the program include: hotels, grocery stores, food and beverage manufacturers, cafeterias, restaurants, etc.

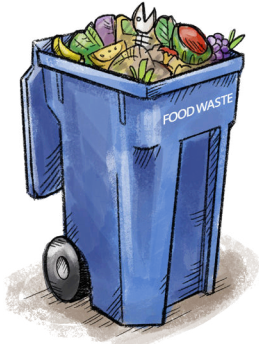
Your business can divert packaged and unpackaged food waste, including prepared food, fruit, vegetables, meat, dairy, and fats, oils, and grease (F.O.G.).

COLLECTION

You can coordinate with your existing waste hauler to transport material in toters, self-contained compactors, or small dumpsters.



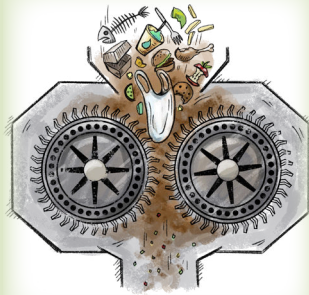
To prevent pest and odor problems, organic waste can be collected in plastic bags.



PRE-PROCESSING

Wasatch Resource Recovery will receive and process the food waste.

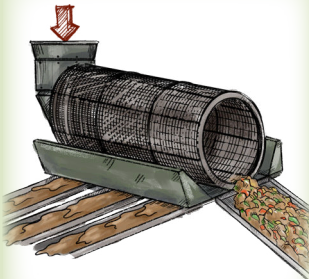
Special equipment is used to remove contaminants and then grind and liquefy the material to create a slurry suitable for the digester.



SHRED
WASTE SHREDDER



LIQUEFY
TURBO DISSOLVER



SCREEN
ROTARY DRUM SCREEN

DIGESTION

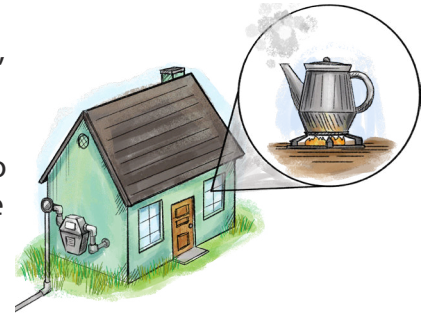
Wasatch Resource Recovery utilizes anaerobic digestion to break down the organic waste.

This is a proven process that aids microorganisms as they turn organic waste into methane and a biobased fertilizer.



END PRODUCTS

A renewable energy source, methane, is produced and converted into pipeline grade natural gas.



Enough natural gas will be created from previously landfilled materials to supply a community the size of Bountiful, Utah (40,000 people).

The solids from the digestion produce a biobased, nutrient-rich fertilizer which can be marketed to the agriculture industry.



www.wasatchresourcerecovery.com